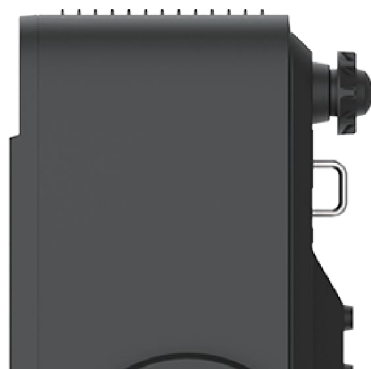


迪恒
股份

DU7070

LASER PROJECTOR

海王星系列激光工程投影机



Product parameters

产品参数

海王星系列-DU7070程激光投影机

Neptune Series-DU7070 Laser Engineering Projector

型号(Model): DU7070	显示芯片(Display chip): 0.67" DMD
投影技术(Projection technology): DLP	画面尺寸(Screen size): 30"~300"
分辨率(Resolution ratio): 1920*1200 (16:10)	噪音(Noise): 34decibel
光源(Light source): MCL激光光源(laser source)	投影角度(Projection angle): 2*360°
光源寿命(Light source lifespan): 20000 hour	扬声器(Speaker): 10W*2
亮度(Brightness): 7000 ISO流明(lumen)	电压(Voltage): AC 90-264V~50/60 Hz
中心亮度(Center brightness): 7100流明(lumen)	尺寸(Size): 480*139*376 (mm)
整机功率(Power): 330W	重量(Weight): 12 (kg)

可更换镜头(Interchangeable Lenses): 1.22~1.53、0.35、0.48、0.53-0.65、0.6、0.7、0.75-1.12、0.8、0.75~0.95、0.95、0.95~1.22/1.5-3.0、1.52~2.92、2.90~5.50

镜头位移(Lens displacement): 电动(electric) V: $\pm 50\%$, H: $\pm 15\%$

对比度(Contrast ratio): 300000:1动态(trends), 5000000:1极致黑(Ultimate Black)

几何校正(Contrast ratio): 水平垂直梯形校正, 校正点拉伸
(Horizontal and vertical trapezoidal correction, correction point stretching)

控制协议(Control protocol): PJLink / AMX / Extron / TCP / RS232

HDBaseT: 可以实现10.2 Gbps的HDMI 1.4传输(包括 HDCP)和100Mbps以太网
(Can achieve 10.2 Gbps HDMI 1.4 transmission (including HDCP) and 100Mbps Ethernet)

HDMI 2.0: 支持4K输入 (Supports 4K input)

3D: 支持主动3D且带3D SYNC同步接口
(Supports active 3D with 3D SYNC synchronization interface)

输入接口(Input): VGA In X 1, Audio In Jack X 1, HDMI 1.4 x1, HDMI 2.0 x1, HDBaseT x 1, 3D SYNC IN*1

输出接口(Output interface): HDMI Out X 1, Audio Out Jack X 1, 3D SYNC OUT*1

其它接口(Other interfaces): LAN*1, WIRED IR*1, RS-232 X 1, 12V OUT*1, 5V/1.5a USB*1

Professional Engineering Machine Architecture

专业工程机架构, 色彩与稳定性双优

该产品采用专业工程机级别的主板、驱动、散热、防尘架构设计。保证产品的色彩的优秀表现和长时间使用的稳定性。同时定位自带标镜的泛工程机的外观和价格, 进一步提升产品的价值和性价比。

The product adopts the professional engineering machine level of the motherboard, drive, heat dissipation, dustproof architecture design. Ensure that the product's excellent color performance and stability for long time use. At the same time, the positioning of the appearance and price of the pan-engineering machine with a standard mirror to further enhance the value of the product and cost-effective.

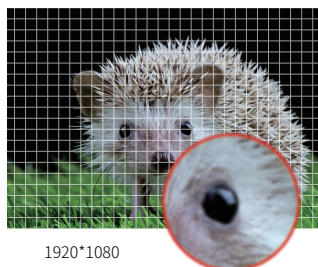


搭载HDMI 2.0接口, 支持4K@60HZ输入

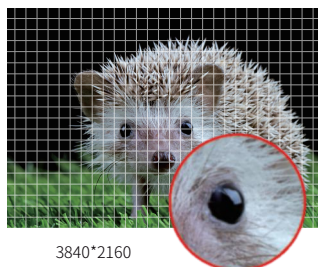
Equipped with HDMI 2.0 interface, supporting 4K@60hz input

该产品搭载了HDMI 2.0接口, 可支持3840*2160@60HZ信号的输入。该功能可以为单台投影或多台投影提供更高分辨率。该功能若搭配其他画面分割设备在前端多一次、二次分割, 最终可以提供8K乃至更高分辨率的点对点高清解决方案。

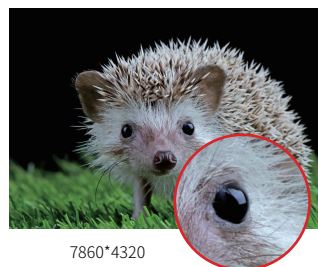
This product is equipped with HDMI 2.0 interface and can support 3840* 2160@60hz Input of signals. This feature can provide higher resolution for single or multiple projectors. If this function is combined with other image segmentation devices for additional or secondary segmentation in the front-end, it can ultimately provide a point-to-point high-definition solution with 8K or even higher resolution.



1920*1080
1080P



3840*2160
4K



7860*4320
8K

主动和被动3D, 3D Warping以及Blending3D功能

产品支持DLP Link 主动3D, 支持常见的左右格式、上下格式、帧顺序格式、帧封装格式等。产品支持被动3D。

支持3D Warping功能, 即投影在做了画面形变情况下, 依然支持主动3D。

支持Blending 3D功能, 即投影在4台融合情况下, 可以通过3D sync接口实现3D同步, 确保多台融合的画面, 在左右眼切换实时同步。

Active and passive 3D, 3D Warping, and Blending3D functionality

The product supports DLP Link active 3D, supporting common left and right formats, up and down formats, frame order formats, frame packaging formats, etc.

The product supports passive 3D.

Supports 3D Warping function, which means that even when the projection is deformed, it still supports active 3D.

Supports Blending 3D function, which means that when projected onto 4 fused images, 3D synchronization can be achieved through the 3D sync interface, ensuring real-time synchronization of the fused images between multiple cameras and switching between left and right eyes

电动镜头设计, 无需拆机可自由更换镜头, 镜头投射比涵盖0.35~5.5

Motorized lens design, no need to disassemble the machine can be free to change the lens, the lens projection ratio covers 0.35~5.5



该系列产品全系配备了电动镜头, 标镜支持电动位移、电动聚焦、电动变焦。同时具备镜头位置信息的存储和载入以及镜头复位功能。全面的镜头功能优于行业水平。

该系列产品支持更换1.22~1.53 (标镜)、0.35、0.48、0.53-0.65、0.6、0.7、0.75-1.12、0.8、0.75~0.95、0.95、0.95~1.22、1.5-3.0、1.52~2.92、2.90~5.50等多款光学表现非常优秀的短焦镜头。短焦至长焦有丰富的镜头投射比覆盖, 无论是狭小空间或是大空间远距离投影, 均可以满足您的需求。

The whole series of products are equipped with motorized lenses, and the standard lens supports motorized shift, motorized focus, and motorized zoom. At the same time with the lens position information storage and loading and lens reset function. The comprehensive lens functions are better than the industry level.

This series of products support the replacement of 1.22~1.53 (standard lens), 0.35, 0.48, 0.53-0.65, 0.6, 0.7, 0.75-1.12, 0.8, 0.75-0.95, 0.95, 0.95~1.22, 1.5-3.0, 1.52-2.92, 2.90-5.50, etc., and other optical performance of the very excellent short Short focal length lenses. The short focal length to long focal length lenses have a wide range of projection ratios, which can satisfy your needs whether it is a small space or a large space for long-distance projection.



搭载HDBaseT接口, 支持70米远距离传输 **Equipped with HDBaseT interface, supporting 70 meter long-distance transmission**

得益于VALENS芯片的强大处理能力, 用户通过超六类网线连接HDBaseT接口, 可实现长达70米的信号传输距离。

Thanks to the powerful processing capability of Valens chips, users can achieve signal transmission distances of up to 70 meters by connecting to the HDBaseT interface through a Category 6 network cable.



侦测电源开机以及侦测信号开机 **Detect power on and signal on**

投影机可以在菜单中设置侦测电源开机以及侦测信号开机。通过电源的通断或输入信号的存在来控制投影机的开机或关机, 在集成系统中, 这提供了更灵活的控制方案。

The projector can be set to detect power on and signal on in the menu. Controlling the power on or off of the projector through the presence or absence of input signals provides a more flexible control solution in integrated systems.



7*24小时不间断稳定运行 **7 * 24-hour uninterrupted stable operation**

机器支持7*24小时不间断稳定运行, 无灯泡光源的炸灯风险。

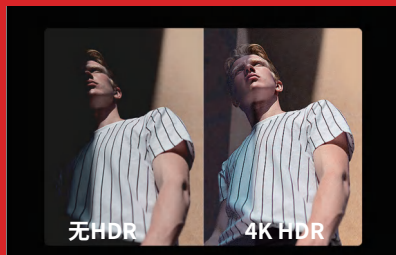
The machine supports uninterrupted and stable operation for 7 * 24 hours, without light bulbs The risk of exploding lights at the source.



标配RJ45、RS232接口, 支持多种控制方式 **Standard RJ45、RS232 interfaces multiple control methods**

产品标配了RJ45、RS232接口, 支持IR遥控、按键板控制、网口、串口等多种控制方式和控制协议。

The product comes standard with RJ45 and RS232 interfaces, supporting various control methods and protocols such as IR remote control, button board control, network port, serial port, etc.



支持4K HDR, 搭载“极致黑”技术

该产品还配备了工程机上罕有的HDR功能。通过提供更多的动态范围和图像细节来提升画面的对比度。该产品可以设置“极致黑”模式,该模式下画面的暗部表现更深邃, HDR和极致黑的双重加持,产品的对比度表现更优秀,画面的层次感更丰富。“极致黑”功能还可以用来很好地解决POM区域漏光问题。

Supports 4K HDR and is equipped with "Extreme Black" technology.

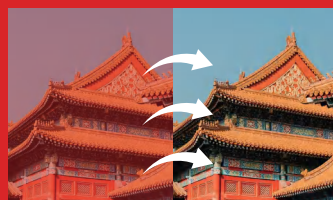
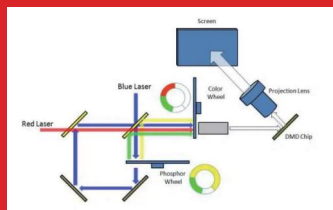
This product is also equipped with a rare HDR function on engineering machines. Improve the contrast of the image by providing more dynamic range and image details.

This product can be set to the "Extreme Black" mode, in which the dark areas of the image are more profound. With the dual blessing of HDR and Extreme Black, the contrast performance of the product is better, and the layering of the image is richer. The "Extreme Black" function can also be used to effectively solve the problem of light leakage in POM areas

多种增色技术加持, Rec.709色域占比高达108% Supported by various color enhancement techniques, Rec.709 has a color gamut ratio of up to 108%

DLP色轮和荧光轮双色轮增加技术加之激光光源原生的出色表现力,使得该系列产品REC.709色域占比高达108%,色彩表现更加优秀。

The addition of DLP color wheel and fluorescent wheel dual color wheel technology, combined with the excellent performance of the original laser light source, results in a color gamut proportion of up to 108% for this series of products Rec.709, with even better color performance.



信号低延迟设计, 低延迟模式下延迟仅16毫秒 Signal low latency design with only 16 ms delay in low latency mode

该系列产品具备信号低延迟设计, 普通投影机信号延迟为40MS左右, 但新海王星系列投影机在低延迟模式下信号延迟仅16MS。在虚拟驾驶等应用中可为用户提供畅快迅捷的体验。



40MS
↓
16MS

The addition of DLP color wheel and fluorescent wheel dual color wheel technology, combined with the excellent performance of the original laser light source, results in a color gamut proportion of up to 108% for this series of products Rec.709, with even better color performance.

丰富的图像模式 Rich image modes

该系列投影内置了釉上彩、演示、动态、HDR、DICOM、融合、用户等丰富的图像模式。优秀的釉上彩模式采用迪恒独有调色技术, 色温与白平衡适宜, 为用户带来精彩非凡的观影体验。

演示模式提供了色彩与亮度更加平衡的投影效果; 动态模式提供了亮度更高的投影效果; HDR模式提供了对比度更高的投影效果; DICOM模式为医学专用模式, 该模式下放射图像的细节展示更加清晰; 融合模式下多台投影之间的色彩差异更小; 用户模式打开后, 用户可以对投影的亮度饱和度等进行更加精细的调节。

This series of projection has built-in rich image modes such as Glaze Color, Presentation, Dynamic, HDR, DICOM, Fusion, User and so on. The excellent Glaze mode adopts Dihan's unique color tuning technology with appropriate color temperature and white balance, bringing users a wonderful and extraordinary viewing experience.

Presentation mode provides projection effect with more balanced color and brightness; Dynamic mode provides projection effect with higher brightness; HDR mode provides projection effect with higher contrast;

创造世界一流的民族品牌

Create a world-class national brand



— 400 - 600 - 6770 —

DHN building 107, No. 1, fortune world headquarters, 2338

Duhui Road, Minhang District, Shanghai

上海市闵行区都会路2338号财富天地总部一号107幢

— www.dhn-int.com —

迪恒技术股份有限公司

DIHENG Technology Co., Ltd.